



Modern Elegance in Prime Edgewood Park



423 ARLINGTON ROAD REDWOOD CITY

Indoor-outdoor living takes center stage at this elegant, modern farmhouse in Redwood City's most sought-after neighborhood, Edgewood Park. Built in 2019, the home offers a fresh, contemporary feel with classic interiors that include fine hardwood floors, abundant natural light, and a floor plan that adapts easily to a variety of needs. Formal living and dining rooms are complemented by a full wine bar and a designer kitchen and a spacious family room opens through a retractable wall of glass to the resort-like rear grounds.

Two bedrooms on the main level are perfect for guests and/or office needs, while three additional bedrooms upstairs, including the primary suite, are arranged around a central lounge. The rear grounds are equally well appointed, with a separately fenced pool, expansive lawn, and generous space for entertaining and play in a gated setting. The overall result is a home that delivers both style and functionality in a premier location just minutes from vibrant downtown amenities and with easy access to major commute routes.

Offered at \$4,500,000 | 423Arlington.com



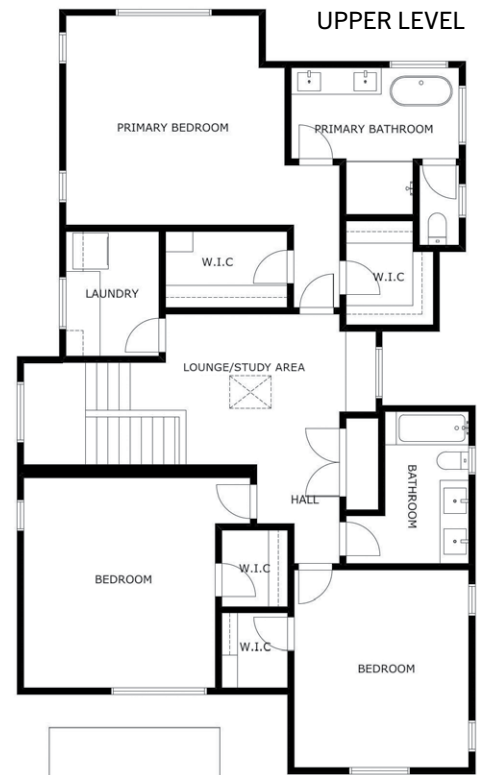


SUMMARY OF THE HOME

- Edgewood Park modern farmhouse built in 2019 with beautiful architecture and interior design
- 5 bedrooms and 3 baths on two levels
- Approximately 3,208 square feet (per County records, buyer to confirm)
- Approximately 8,248 square-foot lot (per County records, buyer to confirm)
- Glass-paned front door opens to a foyer where hardwood floors are introduced and continue throughout
- Living room with linear gas fireplace plus formal dining room with tiered cut-glass chandelier; an adjoining entertainment bar features two U-Line wine coolers, a sink, mirrored backsplash, and abundant cabinetry
- Designer kitchen with beautiful countertops, vertical tile backsplashes, and island with seating beneath two pendant lights; a separate casual dining area has a bubble glass pendant light
- Appliances include a Wolf gas range, Sharp microwave, Bosch dishwasher, and Sub-Zero refrigerator
- Family room, fully open to the kitchen, features wall-to-wall open shelves beneath media wiring and retractable stacking glass doors to the covered patio
- Main level front bedroom, ideal for an office, second bedroom, plus a bath with frameless-glass shower
- Upstairs skylit lounge/study area with media wiring and banquette seating
- Primary bedroom suite has two walk-in closets, a paneled cathedral ceiling with lighting, and en suite bath with dual-sink vanity, freestanding tub, frameless-glass shower, and private commode room
- Two bedrooms, each with cathedral ceiling with lighting and walk-in closet, are served by a bath with dual-sink vanity and glass-enclosed tub with overhead shower
- Other features: customized mudroom with desk and outside entrance; upstairs laundry room with Maytag washer and dryer; detached 2-car garage with built-ins and EV-ready outlet; security alarm; inset speakers in the family room and patio; dual-zone air conditioning
- Wonderful rear yard with covered patio, vast lawn, separately fenced pool with automatic cover, and electronically gated driveway that provides added space for play and entertaining

Offered at \$4,500,000

423Arlington.com



Floor plan is for illustrative purposes only. Living area is approximate.



CLOSE TO...

- Downtown Redwood City0.8 mile 3 min
- Sequoia Hospital0.8 mile 4 min
- Highway 1010.9 mile 5 min
- Caltrain1.0 mile 5 min
- Fox Theater1.2 miles 6 min
- Highway 2803.2 miles 7 min
- San Francisco Int'l Airport 14 miles ... 19 min

(all times and distances are approximate; information provided by Google Maps)

MARK JOHNSON

Broker Associate | CalRE# 00667906

650.619.2828

Mark@MarkWJohnson.net

www.MarkWJohnson.net



**COLDWELL BANKER
REALTY**

